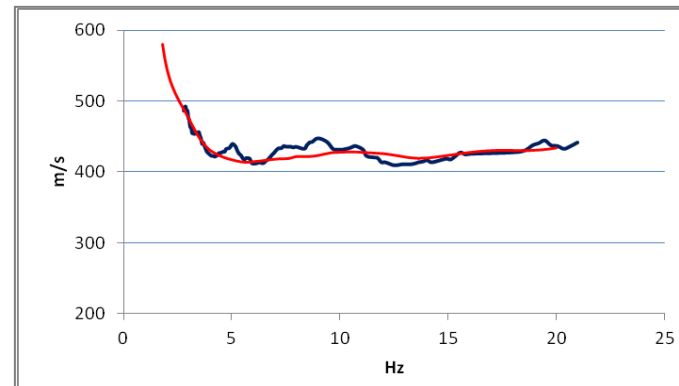
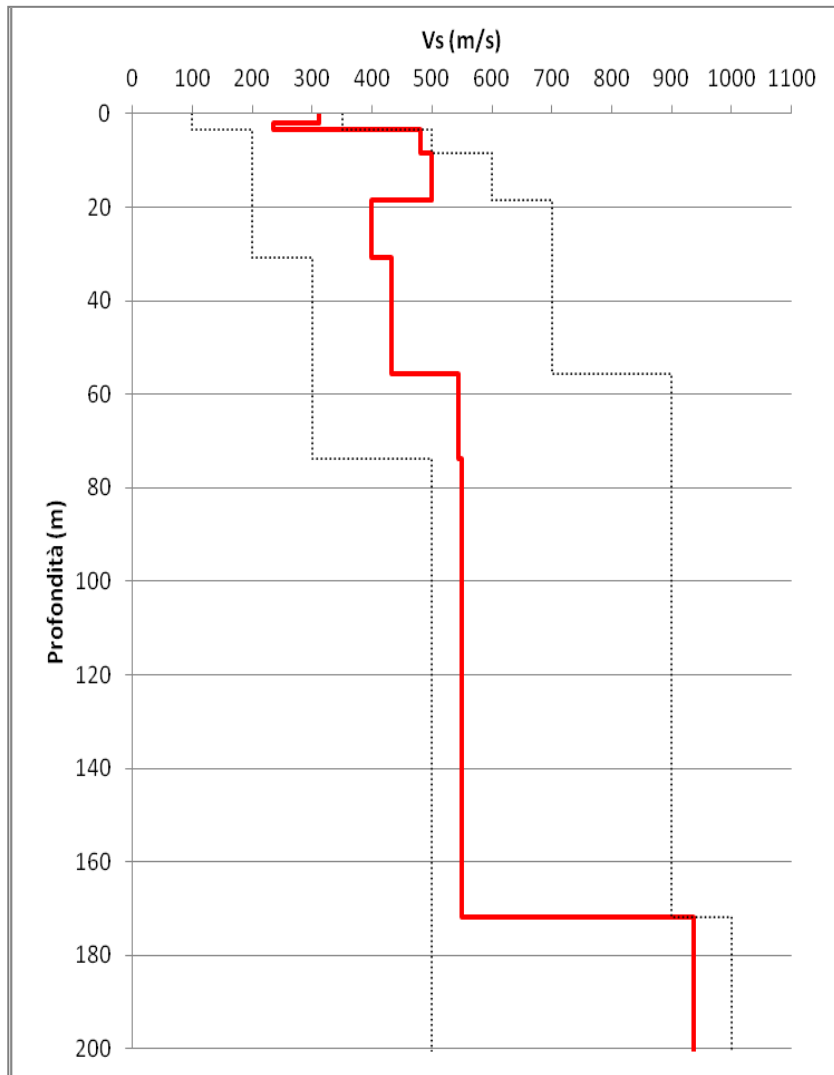
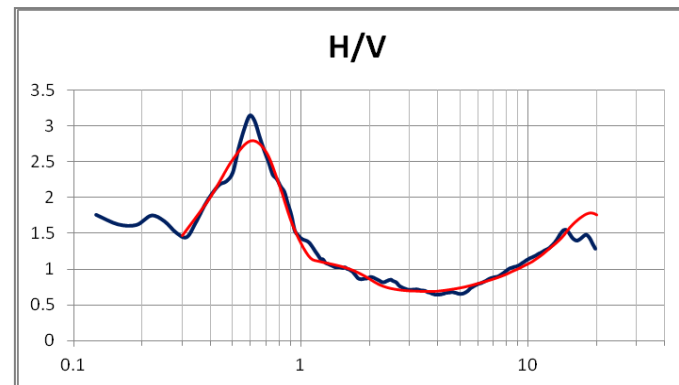


# Profilo di Vs ESAC 1 Cerbaia



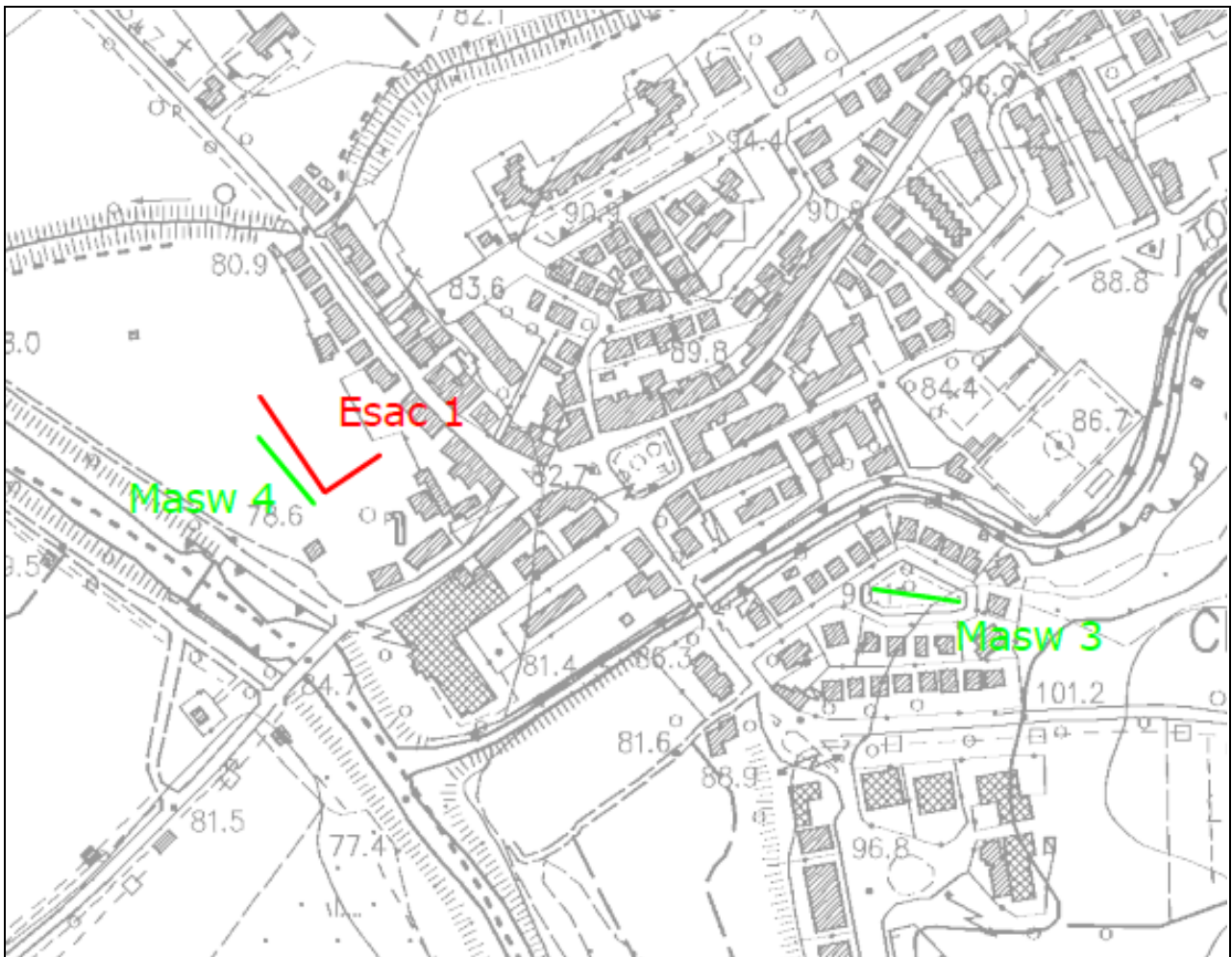
Match curva di dispersione  
teorica /sperimentale  
Array



Match curva di dispersione  
teorica /sperimentale  
HVSR

## Modello monodimensionale Esac 1 Cerbaia

spessore (m)	Vp(m/s)	Vs(m/s)	ro(kg/m <sup>3</sup> )	profondità	Vs medie
1.88	2437.64	311.14	1512.22	0.00	311.14
1.60	1203.23	235.63	2831.87	1.88	271.17
4.87	1475.56	480.65	1672.53	3.47	363.65
10.00	1499.02	499.51	1000.00	8.34	426.96
12.49	2480.45	398.93	1999.02	18.34	415.14
24.68	2421.80	432.16	1371.46	30.83	422.54
18.29	1962.37	543.40	1428.15	55.52	447.19
97.89	2224.58	550.05	1624.63	73.81	500.56
559.24	1408.60	937.44	1763.93	171.69	777.95
0.00	2840.86	1257.58	2554.25	730.93	777.95



UBICAZIONE ESAC CERBAIA

scala 1:5000